

CHURCH WITH POTENTIAL FOR RESIDENTIAL RE-DEVELOPMENT - **FOR SALE**



1,535sq.ft. (**142**sq.m) Approx G.I.A.

Eton Methodist Church

Alma Road

Windsor

Berks

SL4 6JZ

**Suitable for a Variety of Uses Such as Community Use, Medical,
Office or Residential Re-Development (S.T.P.)**

kemptoncarr.co.uk | Windsor Office 01753 851251



Location / Description

Eton Wick is a village in Berkshire, on the River Thames, in the parish of Eton, close to the historic towns of Windsor and Eton.

A detached church consisting of main open plan hall, kitchen and rear meeting room. The site is situated within a predominantly residential area.

Method of Disposal

The Site will be disposed of by private market treaty.

Our client will consider offers as they are received. A best bid process maybe entered into if multiple offers are made.

Our clients are not obligated to accept any proposals made.

Price

Offers are being sought in excess of £285,000 for the freehold of the site.

Please note that our clients have not sought any planning advice on the potential development of the site. The church is being sold as a place of worship with potential for change of use or possible redevelopment, subject to planning permission.

Unconditional offers are sought.

Legal Costs/VAT

Each party to bear their own professional and legal costs.

We do not believe the site is elected to pay VAT.

Accommodation

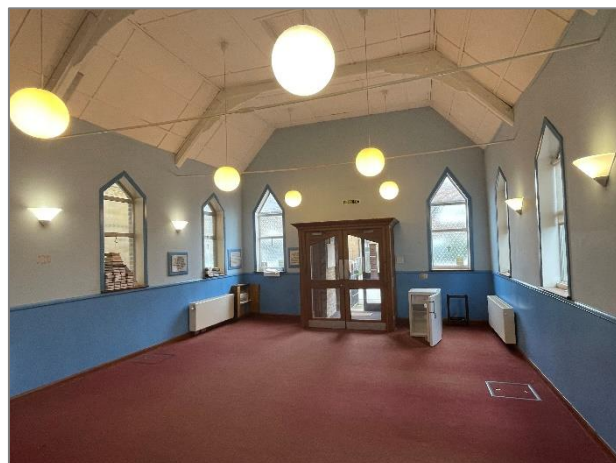
| | Sq.Ft | M2 |
|---------------|-------|--------|
| Approx N.I.A. | 1,534 | 142.59 |
| Approx G.I.A | 1,318 | 122.47 |

EPC

T.B.C.

Viewing

Viewings are strictly by appointment via Kempton Carr Croft.



Viewing and further information

Luke Bennett

luke.bennett@kemptoncarr.co.uk

01628 771221

Mitchell Brooks

mitchell.brooks@kemptoncarr.co.uk

07818 117021

KEMPTON

CARR

CROFT

PROPERTY CONSULTANTS