

UNIT 21, GROVE PARK BUSINESS ESTATE

# **WHITE WALTHAM**

## **SL6 3NH**



## **COMMERCIAL SPACE TO LET**

1,615 sq ft (150 sq m)

Office/commercial space available on flexible terms

Owned and managed by:

**SORBON**  
ESTATES

UNIT 21 GROVE PARK BUSINESS ESTATE

# WHITE WALTHAM

## SL6 3NH

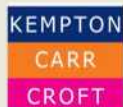
Our commitment-free, flexible lease business units at Grove Park Business Estate are designed to help you expand your current workspace without increasing overheads.

- Flexible lease options available
- Parking spaces available
- Estate CCTV and out of hours security
- On site café, nursery and barber
- EPC: on application
- Class E use

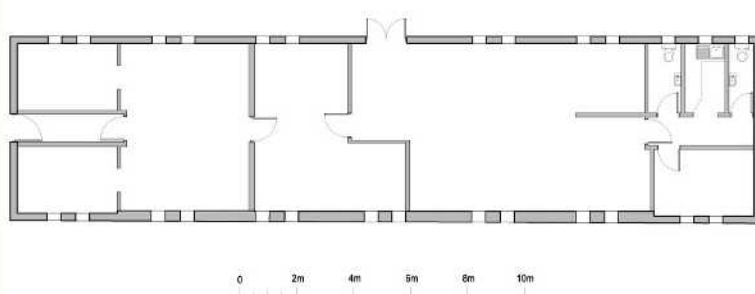
Rent (psf)	Total (pa)	Total (pcm)
£11.15 + VAT	£18,000 + VAT	£1,500 + VAT



Sophie Holmes  
01628 439006  
sophie@pagehardyharris.co.uk



Luke Bennett  
01628 771221  
Luke.bennett@kemptoncarr.co.uk



Misrepresentation clause. These particulars are set out as a general outline only for the guidance of intending purchasers or lessees and do not constitute the whole or any part of an offer or contract. The information is compiled and given in good faith but without any responsibility whatsoever. Intending purchases or tenants should not rely on them as statements or representations of fact. June 2022

Owned and managed by:

**SORBON**  
ESTATES