

UNIT 16, GROVE PARK BUSINESS ESTATE

WHITE WALTHAM

SL6 3NH



COMMERCIAL SPACE TO LET

2,233 sq ft (208 sq m)

Office/commercial space available on flexible terms

Owned and managed by:

SORBON
ESTATES

UNIT 16 GROVE PARK BUSINESS ESTATE

WHITE WALTHAM

SL6 3NH

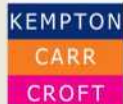
Our commitment-free, flexible lease business units at Grove Park Business Estate are designed to help you expand your current workspace without increasing overheads.

- Flexible lease options available
- Three phase power and category II lighting
- 12 parking spaces
- Estate CCTV and out of hours security
- On site café, nursery and barber
- EPC: on application
- Class E use

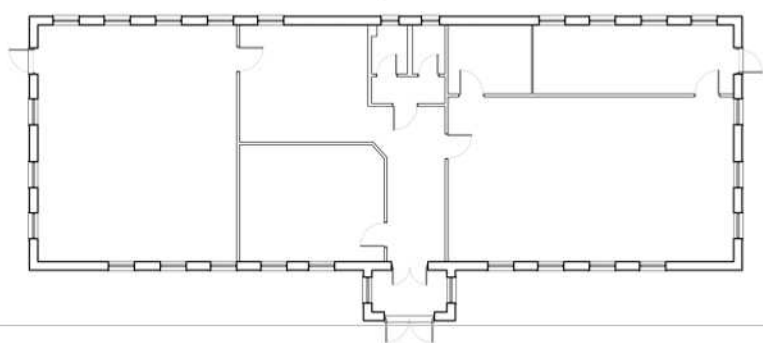
Rent (psf)	Total (pa)	Total (pcm)
£11.20 + VAT	£25,000 + VAT	£2,083 + VAT



Sophie Holmes
01628 439006
sophie@pagehardyharris.co.uk



Luke Bennett
01628 771221
luke.bennett@kemptoncarr.co.uk



Misrepresentation clause. These particulars are set out as a general outline only for the guidance of intending purchasers or lessees and do not constitute the whole or any part of an offer or contract. The information is compiled and given in good faith but without any responsibility whatsoever. Intending purchasers or tenants should not rely on them as statements or representations of fact. June 2022

Owned and managed by:

SORBON
ESTATES