

CEDAR & MAPLE, GROVE PARK

# WHITE WALTHAM, MAIDENHEAD SL6 3LW

**NEW 2022 OFFER**  
**ONE MONTH RENT**  
**FREE WHEN YOU**  
**SIGN UP!**



## OFFICE/COMMERCIAL SPACE TO LET

358 — 1,086 Sq Ft

Office/commercial space available on flexible terms

- On-site parking, nursery, barber and café
- CCTV and phone entry system
- Refurbished suites with excellent natural light

Owned and managed by:

**SORBON**  
ESTATES

**CEDAR & MAPLE GROVE PARK**

**WHITE WALTHAM  
MAIDENHEAD**

**SL6 3LW**

Our commitment free, flexible lease business suites at Grove Park Business Estate are designed to help you expand your current workspace without dramatically increasing overheads.

**Cedar Court**

Suite	Floor	Area (sq ft)	Rent (pm)
2a, 3 & 4	Ground	1,086	£2,269 + VAT
10	First	620	£1,292 + VAT
15	First	650	£1,354 + VAT
16	First	561	£1,335 + VAT

**Maple Court**

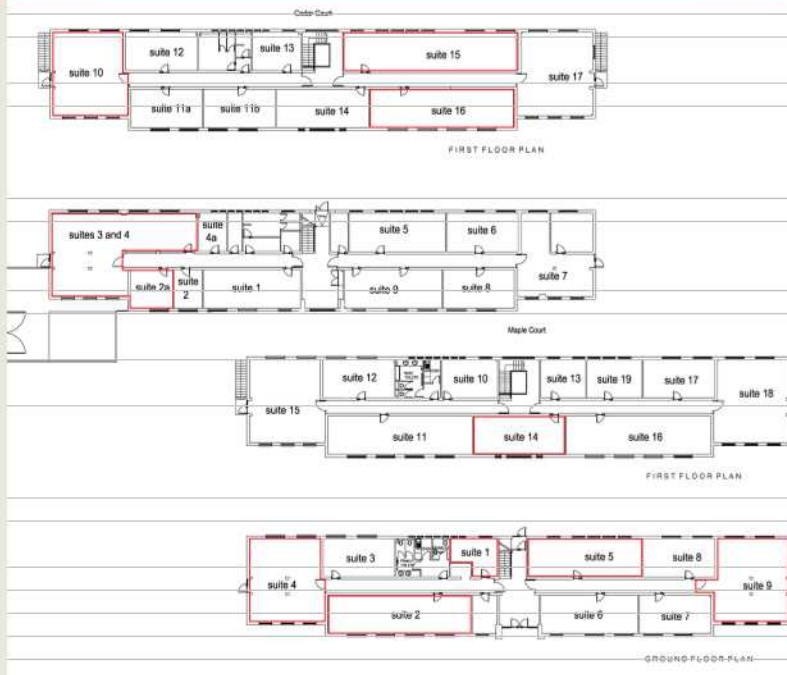
Suite	Floor	Area (sq ft)	Rent (pm)
1 & 2	Ground	720	£1,500 + VAT
4	Ground	650	£1,354 + VAT
5	Ground	446	£929 + VAT
9	Ground	616	£1,283 + VAT
14	First	358	£746 + VAT



Sophie Holmes  
01628 439006  
sophie@pagehardyharris.co.uk



Maria Hoadley  
01628 582707  
maria.hoadley@kemptoncarr.co.uk



Misrepresentation clause. These particulars are set out as a general outline only for the guidance of intending purchasers or lessees and do not constitute the whole or any part of an offer or contract. The information is compiled and given in good faith but without any responsibility whatsoever. Intending purchasers or tenants should not rely on them as statements or representations of fact. April 2021

Owned and managed by:

